



**Working together to build a
new Velindre Cancer Centre
for South East Wales**



**Established in 1968,
Velindre Cancer Centre has a
proud history of delivering
excellent non-surgical tertiary
cancer services, treatment
and care for the 1.5 million
¹patient population of
south east Wales.**

The Velindre Cancer Service is run by Velindre University NHS Trust and is a key component of the south east Wales network of cancer services we deliver in partnership with our regional health board colleagues.

We are all working together to improve cancer services across the region to meet future demand, improve patient experience and patient outcomes. We must do this because one in two people will develop cancer at some point in their lives, according to the most accurate forecast to date.¹



One of our key developments is a new Velindre Cancer Centre in Whitchurch which will welcome its first patient in 2025. The new cancer centre will support the region in having high quality buildings, facilities and equipment that can provide cancer treatment, care and support for patients for decades to come. It will have the capacity to treat 8,500 new patients and 160,000 patient appointments a year.

The Welsh Government approved the Outline Business Case for the new cancer centre in March 2021. It will be developed in partnership with patients, staff, the local community and partners and the Acorn Consortium.

We are proud of our history and excited for our future.



¹ British Journal of Cancer

Starting work on the new Velindre Cancer Centre – the commencement of Enabling Works

What are the enabling works?

The first construction phase of works associated with the new Velindre Cancer Centre is the enabling works. The enabling works prepare the site for the construction of the new Velindre Cancer Centre. The key activities associated with the works are:

- the establishment of temporary roads from Cardiff and Vale University Health Board land at Whitchurch hospital into the site. This will enable us to deliver the key materials onto the site;
- establishing a haul road on the site itself, allowing the transport of materials on site to support the build of the bridge towards Asda. This haul road will travel from the southern part of the site at the adopted footpath, along the perimeter of the land and continue northwards, where the haul road will meet the new bridge;
- connect utilities to feed the new Velindre Cancer Centre, and
- building the bridge from the northern end of the haul road, travelling over the old railway cutting and connecting at Asda, providing the transport link to the new Velindre Cancer Centre.

All necessary planning permissions are in place with Cardiff Council to allow us to commence the works.

Some phases of the enabling works will directly impact the public's access to Public Rights of Way (PROW). When this is the case, we will be diverting established PROWs to allow elements of the work to take place following

receipt of the necessary permissions from Cardiff Council. All diversions will be clearly communicated and signposted to the public.

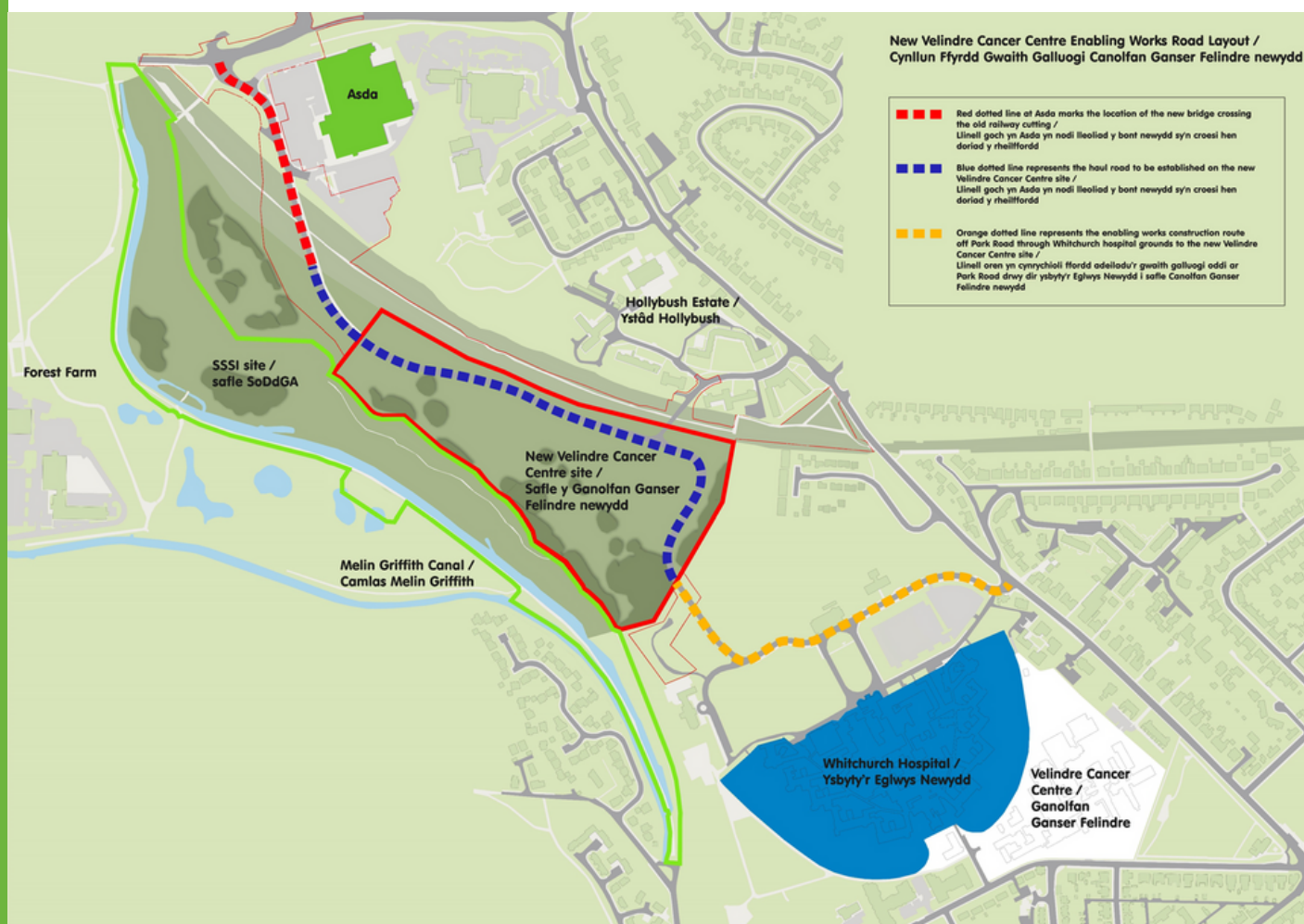




Other works will require changes to the current traffic management arrangements. When this is the case, we will communicate the proposed changes in advance.

The first phase of works, from August through the autumn, will include the establishment of a temporary construction access road at the Whitchurch hospital followed by the development of foundations for the access road and bridge.

You may find the information on the map below useful.



Do you have the permissions to deliver this work?

The works have been approved by Cardiff Council and the licences and permissions are all in place. We are working closely with all our key partners including Cardiff and Vale UHB, Cardiff Council and Natural Resources Wales to ensure the works are carried out safely and in accordance with the conditions of the approvals. All works will be overseen by an ecologist and delivered in line with our Arboricultural Method Statement.

Will any trees come down to make way for the works? Will they be replaced?

Some trees will be removed during the development, and where possible, we will re-locate any viable trees along with our re-planting and habitat mitigation schemes. A number of factors determine which trees will replace those felled, including the longevity of the species type, their ability to tolerate climate change and other benefits such as removing pollutants associated with diesel exhaust, brake dust and other particles associated with roads and car parks. For example, both silver birch and field maple are known for their ability to resist pollution while supporting wildlife. The tree planting will be further complemented by understory planting including hazel, hawthorn, elder, dogwood, holly and rowan with woodland grasses and ferns complementing the space between the larger specimen trees.

Is the air quality being monitored?

Yes. Monitoring of Air Quality is a condition that forms part of our Planning Permission for the new Velindre Cancer Centre. In fact, it is a standard planning condition for major infrastructure developments such as the new centre. We are monitoring air quality in the area surrounding the site for the new Velindre Cancer Centre. In advance of the enabling works, we have been collecting data to determine baseline readings. You can read the reports we have published on our website.

How many vehicles will be using the roads in Whitchurch during enabling works?

During the works, an average of under 10 HGVs per day are expected in relation to the roundabout improvement works at Longwood Drive, and a maximum of 20 construction HGV deliveries during any a single day for the bridge construction element of the works. Typically, it is anticipated that deliveries will be fewer than this.

Information regarding traffic volume related to the new Velindre Cancer Centre project is included in the Construction Environmental Management Plan which is available on the Cardiff Council Planning Portal.

How will you keep us engaged?

Now that we have a design for the new centre we are also arranging opportunities for you to meet the team and discuss the design and community benefits opportunities from September. They will also allow us to ensure that we are planning the development with your concerns and needs in mind and where possible addressing them as quickly as possible.

How are you going to keep us updated?

We are going to deliver regular electronic and quarterly printed newsletters which will be mailed directly to the local community. They will set out the key phases of work and progress made in developing the new Velindre Cancer Centre and how you can get in touch with us.

Any urgent updates will be communicated on the Velindre Matters Facebook and Twitter pages so please follow them and use these channels to keep informed.

Who do I contact if I'd like further information?

You may have further questions you'd like to ask as we begin works. If so, please get in touch with us on Contact.Velindre@wales.nhs.uk.

Many thanks for your support, patience and cooperation as we begin work on a new Velindre Cancer Centre for the south east Wales region.

